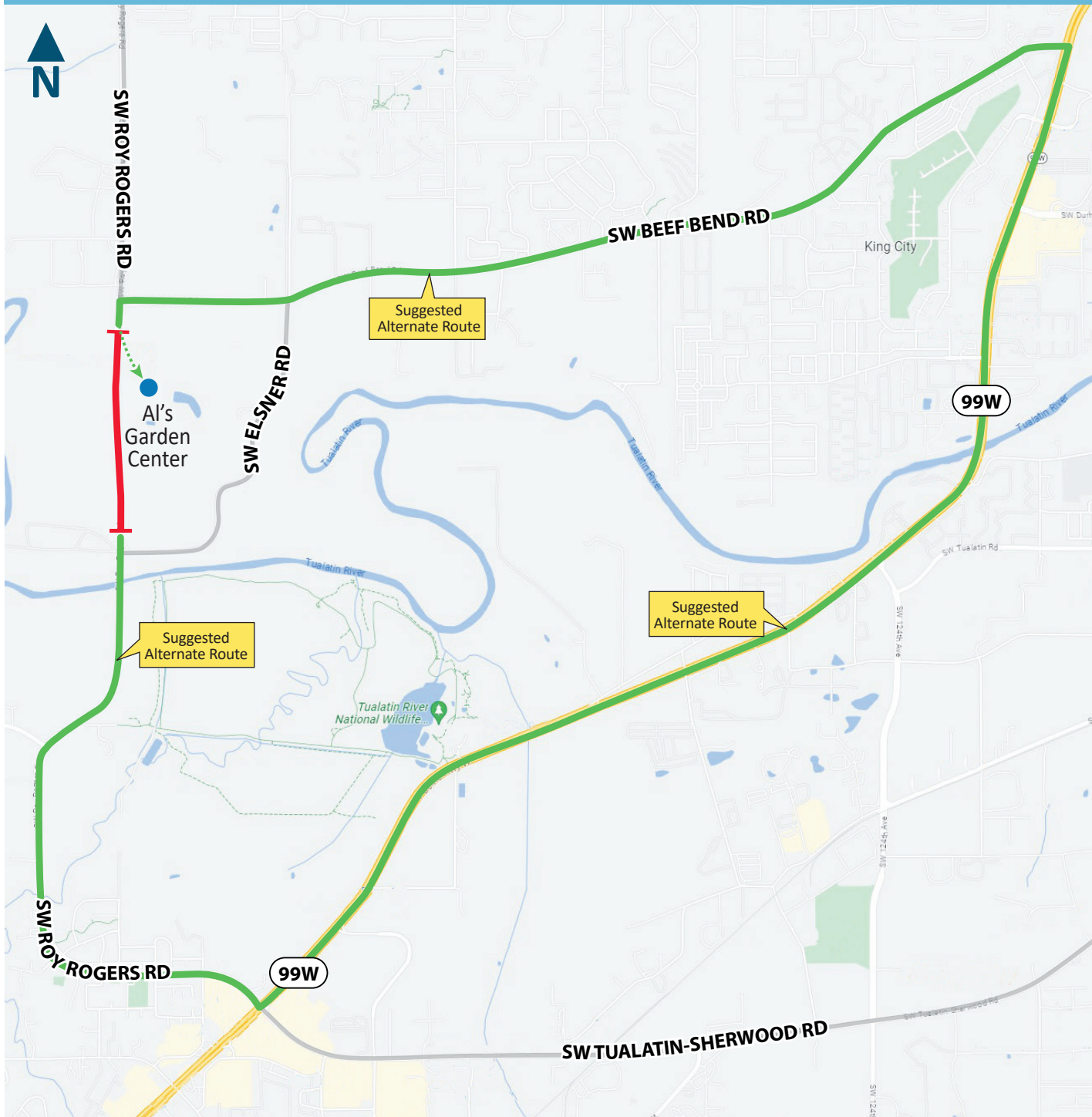


HEADS UP! WEEKEND ROAD CLOSURE OF ROY ROGERS ROAD



Friday, Aug. 18 to Monday, Aug. 21

SW Roy Rogers Road, between SW Beef Bend Road and SW Scholls-Sherwood Road, will be closed starting at **7:00 pm on Friday, August 18** and will reopen at **5:00 am on Monday, August 21**.

Construction may occur at all hours, day and night, to install the Willamette Water Supply pipeline from the east side to the west side of Roy Rogers Road. Please follow detour signs. Al's Garden Center will be open during normal business hours and can be accessed from the north on Roy Rogers Road (near Beef Bend Road).

**Thank you for your patience.
Please drive carefully.**

Learn More:

Willamette Water Supply Program
503-941-4570
info@ourreliablewater.org
www.OurReliableWater.org

Construction updates:

www.ourreliablewater.org/tualatin-sherwood-area-pipeline-project

Willamette Water Supply
Our Reliable Water Future